

Define DFF Segments

Inventory > Setup > Flexfields > Descriptive > Segments

Define a context-sensitive DFF as below.

Reference field is :TOMAI_MAIN_HEADER_BLK.ORGANIZATION_ID. (This is a “:Block.Field” reference you get from concatenating the values of the Block and Field from when you did Help > Diagnostics > Examine above.) In the Context Field Values block, enter the Organization_ID you found above:

Oracle Applications - Selective Services Instance (Created Jan 05, 2005)

File Edit View Folder Tools Window Help

Descriptive Flexfield Segments

Application: Title:

Freeze Flexfield Definition Segment Separator:

Context Field

Prompt: Required

Value Set: Displayed

Default Value:

Reference Field:

Context Field Values

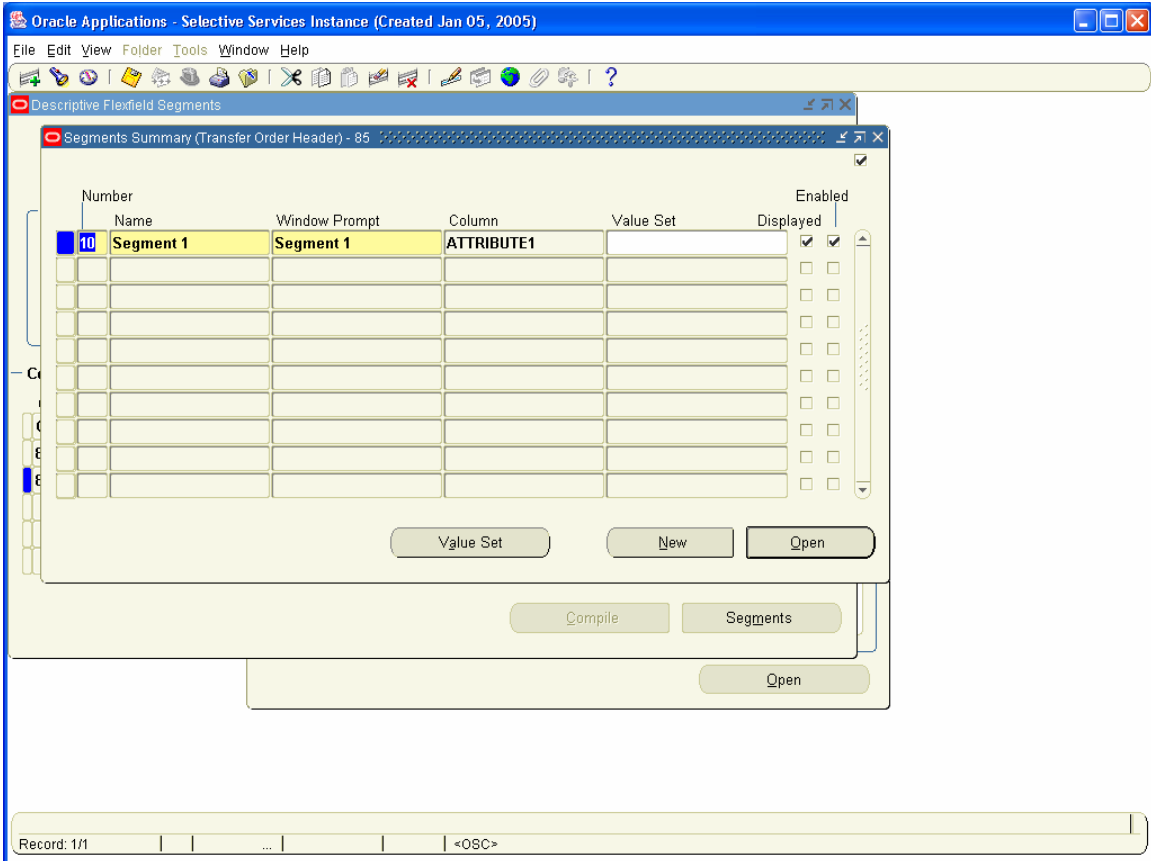
Code	Name	Description	Enabled
Global Data Elements	Global Data Elements	Global Data Element Context	<input checked="" type="checkbox"/>
85	85		<input checked="" type="checkbox"/>
			<input type="checkbox"/>
			<input type="checkbox"/>
			<input type="checkbox"/>
			<input type="checkbox"/>

Compile Segments

Open

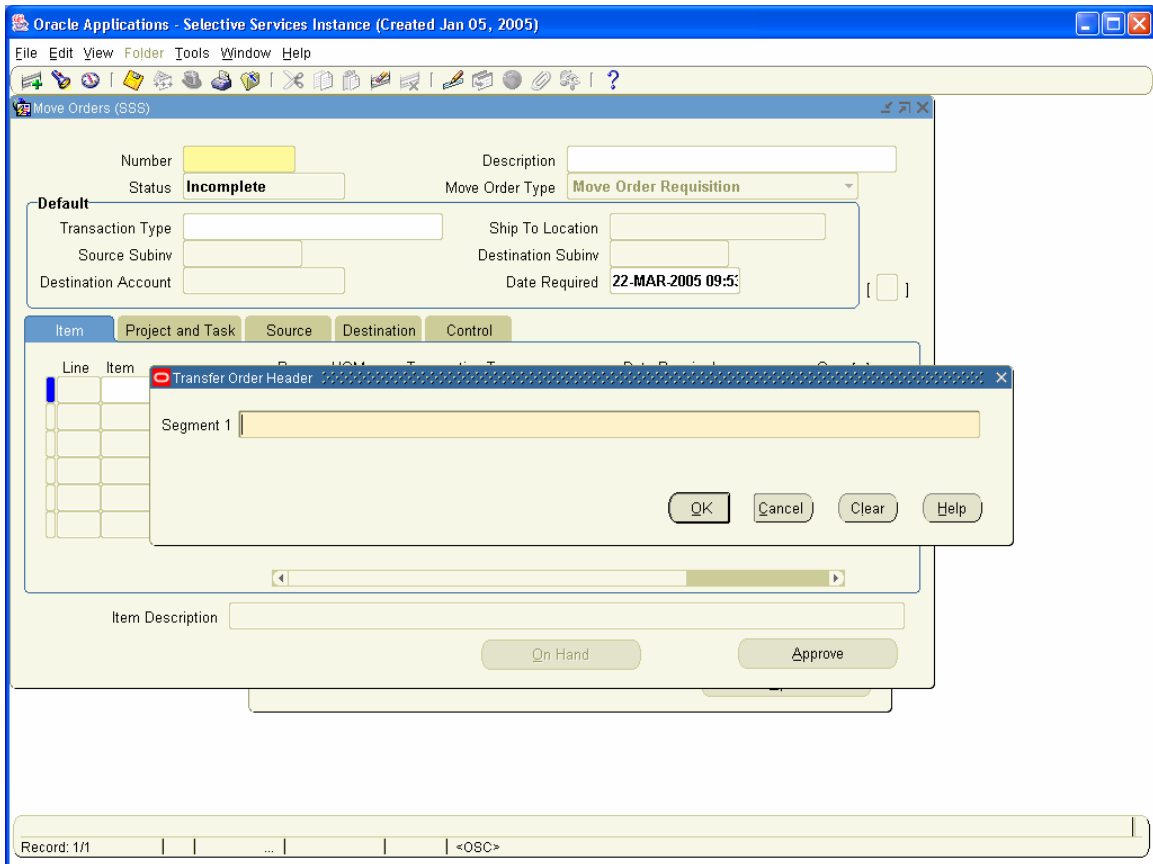
Record: 1/2 | ... | <OSC>

Click on the line that contains your Organization_ID, then click on the Segments button. Enter your segment information:



Edit as necessary, add Value Set information if required, then save, freeze and recompile your DFF.

Check by navigating to Move Order form. Your DFF should show when you are in the organization you specified:



Change organization to one that you didn't specify and check that the DFF is not visible.

You will have to add a Context Value line (and segment definition) in the DFF definition for each organization in which you'd like to see the DFF.